



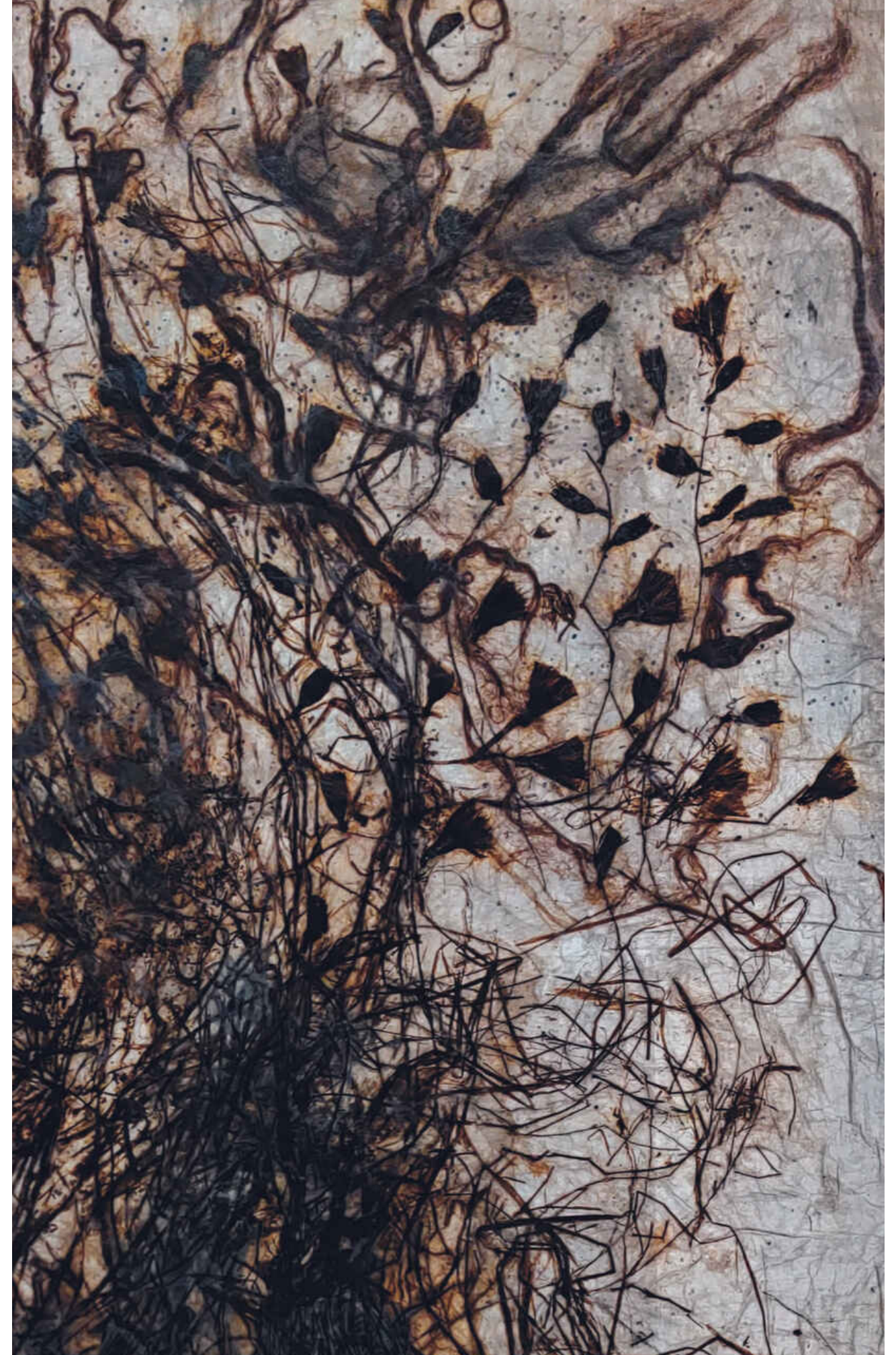
Jayashree Chakravarty

Installation view, EARTH as HAVEN Under the canopy of love, Musee Guimet, 2017



TERRA FIRMA

Dry flowers, roots, jute, seeds, tea leaves, acrylic paint, cotton fabric, Nepali paper, thin tissue paper, synthetic glue,
94.75 x 64.25 inches, 2020

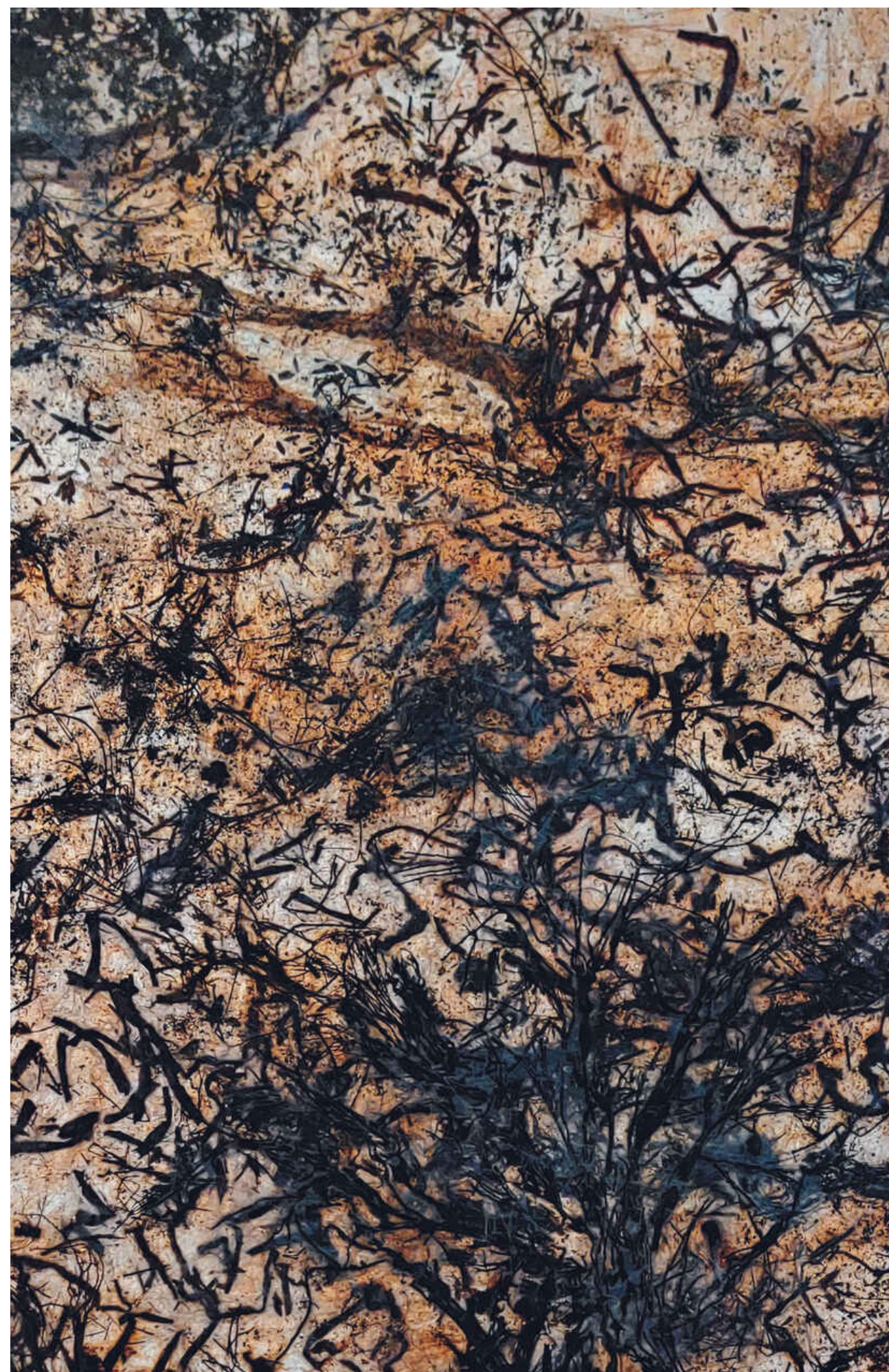


TERRA FIRMA (DETAIL)



SOARING TO THE SKIES

Tea leaves, tea stain, dry flowers, roots, jute, seeds, tea leaves, acrylic paint, cotton fabric, Nepali paper, thin tissue paper, synthetic glue, 95.75 x 63.5 inches, 2020



SOARING TO THE SKIES (DETAIL)



WILDERNESS

Watercolour, Graphite, Charcoal, Ink shell, Acrylic on paper, 39.25 x 27.75 inches, 2020



SPRING TIDES

Watercolour, Graphite, Charcoal, Ink, Acrylic on paper, 39.25 x 27.75 inches, 2020



UNTITLED

Sequins, acrylic, oil on canvas, 25.5 x 37.5 inch, 2020



UNTITLED

Sequins, acrylic, thin paper, oil on canvas, 35 x 36 inch, 2020



UNTITLED 1
Pencil, charcoal and ink, 8.25 x 8.25 inch, 2019



UNTITLED 3
Pencil, charcoal and ink, 8.25 x 8.25 inch, 2019



ROOTS TO SHOOTS

Paper, cotton fabric, cotton, plants, jute, tea stain, acrylic paint, seeds, 88.75 x 65.75 inch, 2018



CONTINUITY OF LINEARITY

Paper, cotton fabric, jute, tea stain, coffee stain, cotton, seeds, leaf, 95.5 x 64.5 inch, 2018

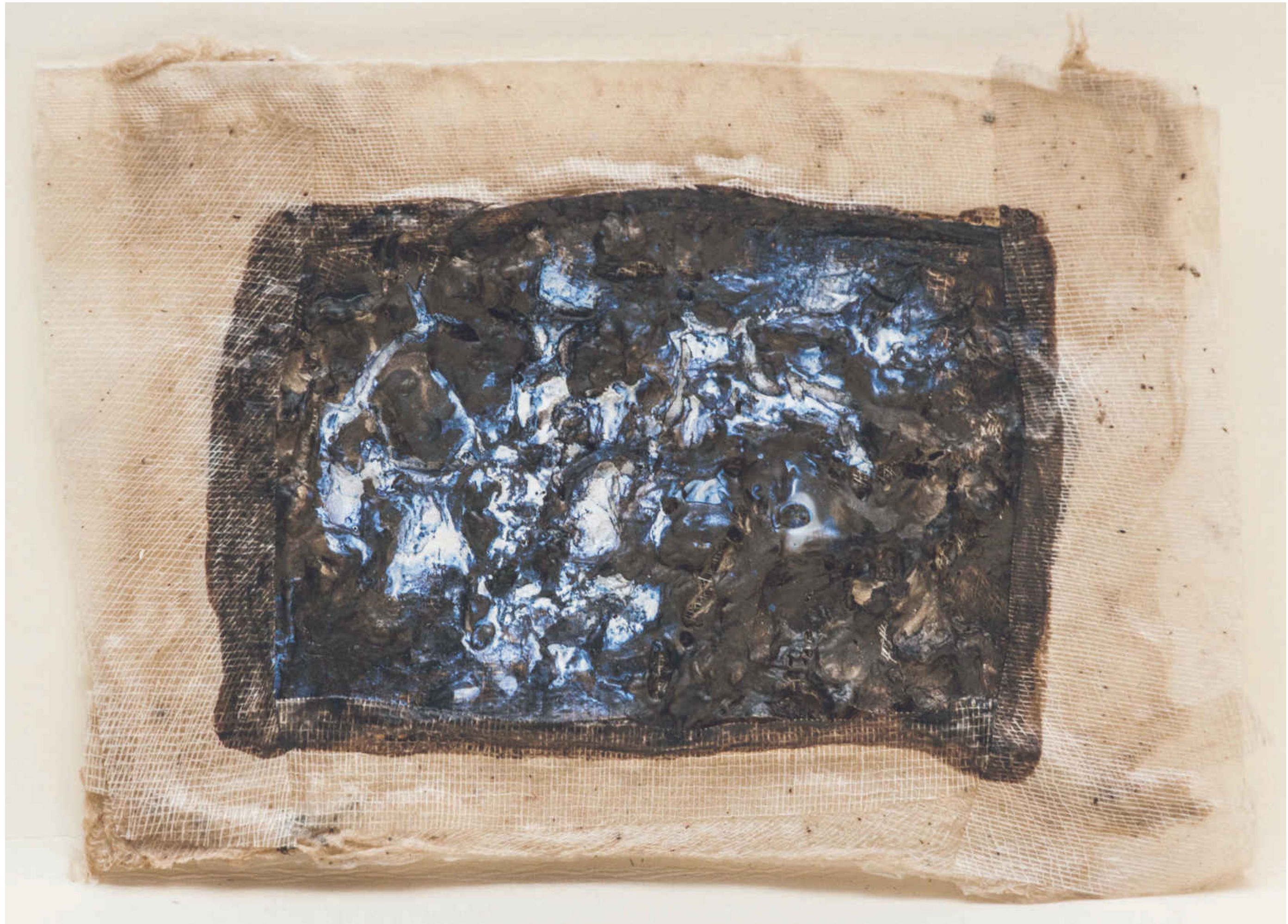


EARTH AS HAVEN: UNDER THE CANOPY OF LOVE

Immersive Installation, Cotton fabric, Nepali paper, tissue paper, jute, dry leaves, tea stain, clay, synthetic glue, acrylic colour, sequins, glass and wooden beads and steel rods, Dimensions Variable, 2017



Details, Earth as Haven: Under the Canopy of Love
Installaion view, Kiran Nadar Museum of Art, New Delhi, 2020-21/ Musée Guimet, Paris (2017-18)/ CSMVS, Mumbai (2018)



ARTWORK 2 (SET OF 20 OBJECTS)
Mixed Media on paper, Variable Sizes, 2017



ARTWORK 1 (SET OF 20 OBJECTS)
Mixed Media on paper, Variable Sizes, 2016



DEVELOPMENTAL PLOT

Cotton fabric, Nepali paper, tissue paper, jute, grass, dry leaves, weeds, tea stain, clay, glue, sequins, glass beads, 73.5 x 50.25", 2016



DEVELOPMENTAL PLOT (DETAIL)

Cotton fabric, Nepali paper, tissue paper, jute, grass, dry leaves, weeds, tea stain, clay, glue, sequins, glass beads, 73.5 x 50.25", 2016



WEEDS IN BARELAND

Cotton fabric, nepali paper, tissue paper, jute, grass, dry leaves, weeds, tea stain, clay, glue, sequins, glass beads, magnetic tape of old audio cassettes, 77 x 51.75", 2016



WEEDS IN BARELAND (DETAIL)

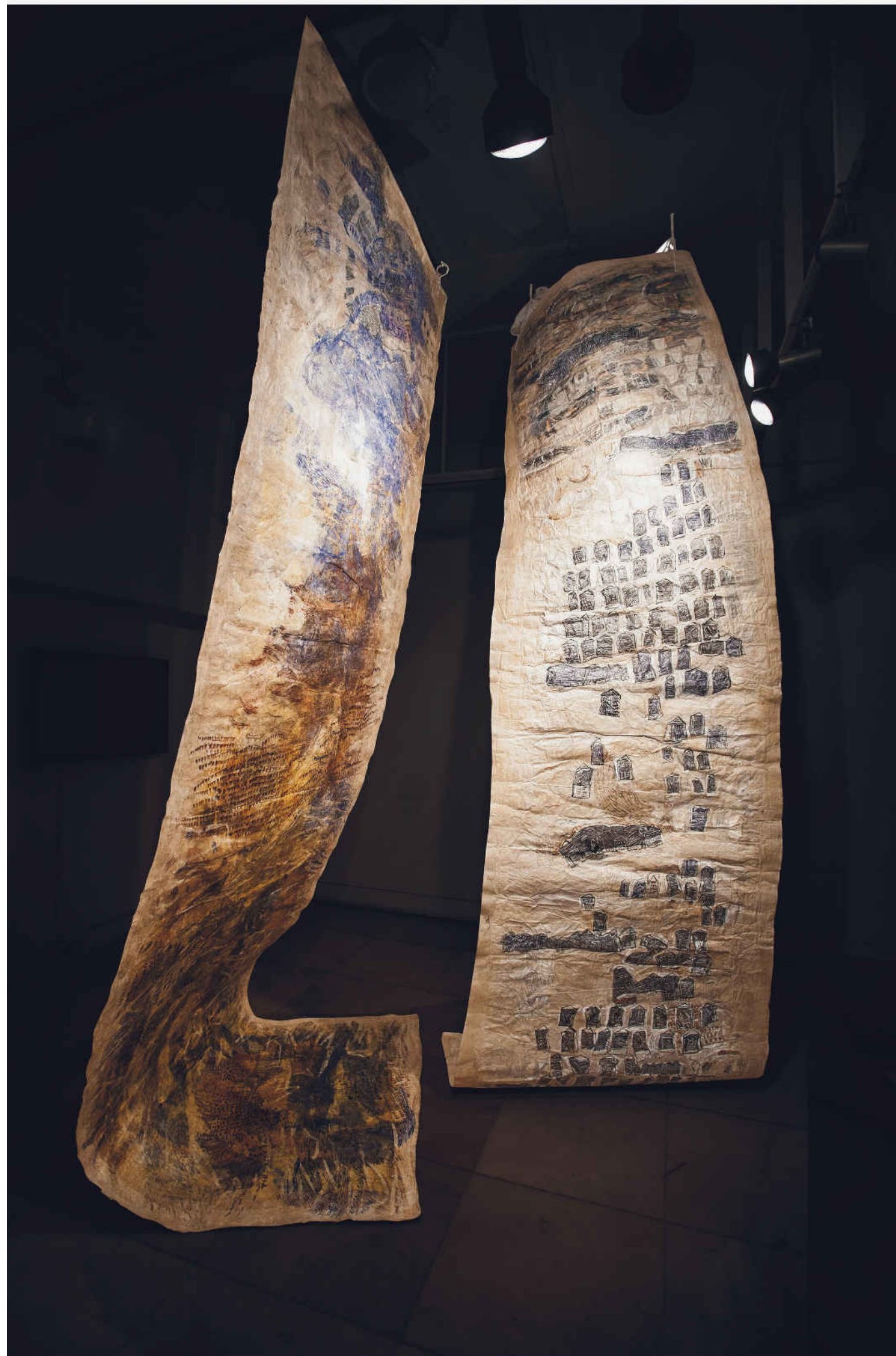


LOST LAKE UNDER THE CITY

Cotton fabric, Nepali paper, tissue paper, jute, grass, dry leaves, weeds, tea stain, clay, glue, sequins, glass beads, 71.25 x 49.25", 2016



LOST LAKE UNDER THE CITY (DETAIL)



SCRIPT IN NATURE

Installation view, Musee de la Toile de Jouy, Versailles, 2015

Fabric, Nepali paper, synthetic glue, tea stains, acrylic paint, jute fibre and beeswax, Scroll, 429 x 130cm scroll 2 367 x 110 cm, 2015



SCRIPT IN NATURE (DETAIL)



AQUATIC PLANTS

Acrylic & oil on canvas, 44 x 50 inches, 2013



CRANE

Acrylic & oil on canvas, 35 x 36 inches, 2013



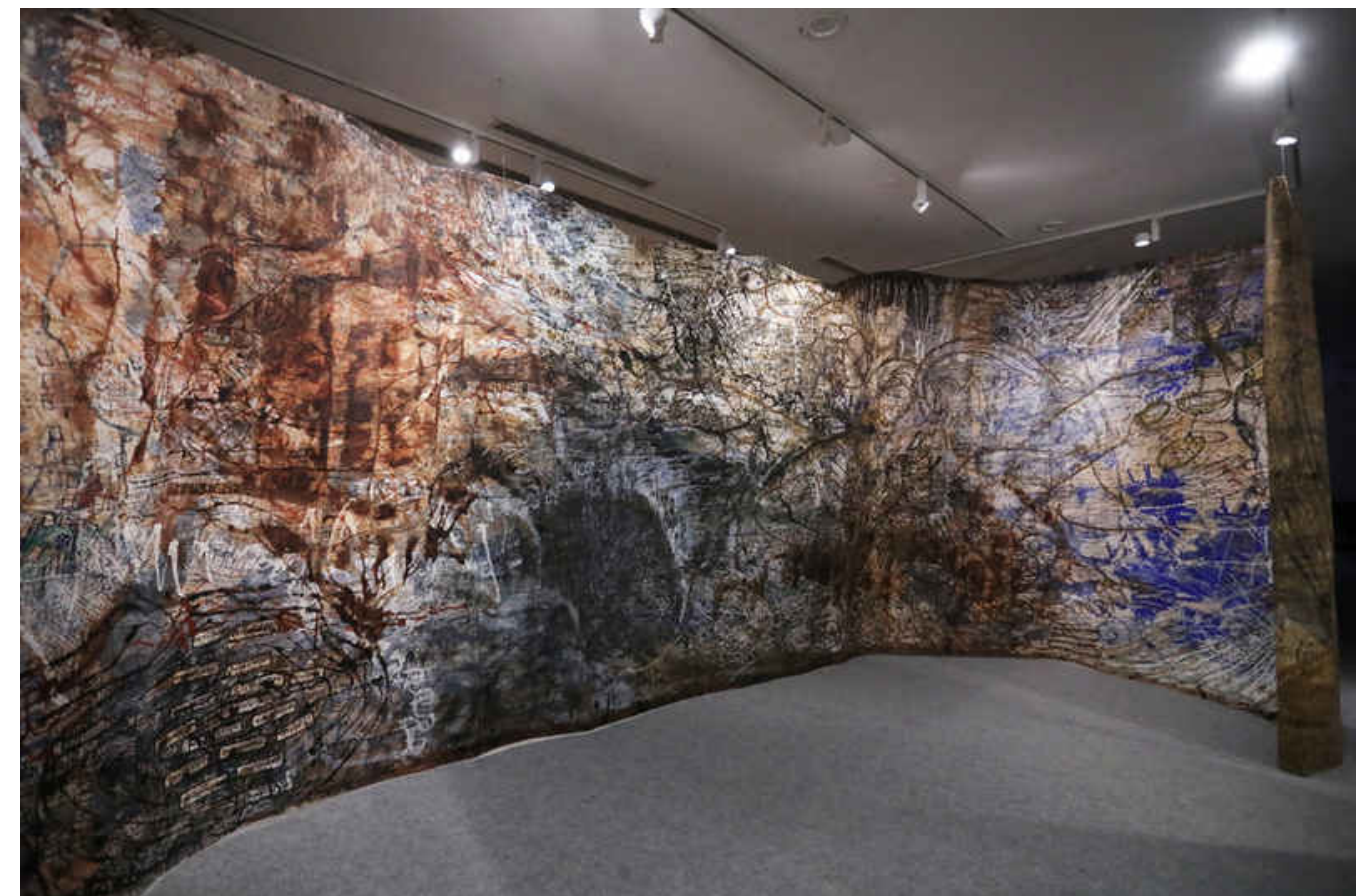
SHALLOW WATER

Acrylic & oil on canvas, 52 x 70 inches, 2012



UNFOLDINGS: THE ROUTE MAP OF EXPERIENCE

Installation size: part a: 10.5' x 41' and part b: 10.5'x14.5', Textile, Nepali paper, tissue, brown paper, pigment, acrylic paint, glue, tea and coffee stain, 2003



Details, Unfoldings: The Route Map Of Experience
Installaion view, Kiran Nadar Museum of Art, Noida, 2021



UNTITLED

Pigment, acrylic and paper boat on paper, 30.25 x 57 inch, 1993-94



PADDY FIELD

Oil on canvas, 44.5 X 43.5 inch, 1977 - 78



PADDY FIELD

Oil on canvas, 36 x 88 inch, 1976 - 77

Jayashree Chakravarty

Jayashree Chakravarty (b. 1956) completed her Graduation at Visva Bharati in the sprawling natural environs of Santiniketan. She pursued her masters at the Faculty of Fine Arts at MS University, Baroda, where she was exposed to an urban sensibility. She was also an artist in residence at Aix en Provence from 1993–95 where she was influenced in the formative years of her practice by the French movement Supports/Surfaces, especially by Claude Viallat and also had conversations with some of the group members at the time. Inventing her own creative techniques, using organic material and varied kinds of papers, her installations in the form of paper scrolls remain unique in their conceptions and execution.

Jayashree has had exhibitions both in India and abroad, with shows at various museums, in Nice, France; Berlin, Germany; Chicago, USA, and Singapore. Her recent shows include her exhibition at Musée Guimet, Nice, France, Asian Art Museum, San Francisco, and at Chhatrapati Shivaji Maharaj Vastu Sangrahalaya, Mumbai, and Kiran Nadar Museum of Art, Noida & New Delhi.

The artist lives and works in Kolkata, India.